

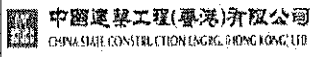
Activity Name	Original Duration	Planned Start	Planned Finish	2011				2012				2013				2014				2015				2016	
				Q3	Q4	Q1	Q2	Q3	Q4	Q1	Q2	Q3	Q4	Q1	Q2	Q3	Q4	Q1	Q2	Q3	Q4	Q1	Q2		
HY/2009/15 - CWB TUNNEL (CBTS SECTION)																									
SUBMISSIONS COMPLYING WITH EPs																									
EM&A Manual (rely on the Master EP's submission EP-364/2009/A Condition 2.9)																									
Baseline Monitoring Report (rely on the Master EP's submission EP-364/2009 Condition 3.3)																									
Monthly EM&A (rely on the masters EP's Submission, EP-364/2009/A Condition 3.4)																									
A dedicated website (rely on the master EP's submission, EP-364/2009/A Condition 4.2)																									
Management organization of main construction companies (FEP Condition 2.6)	1d	02-Oct-10	02-Oct-10																						
Work Schedule (FEP Condition 2.7)	1d	27-Oct-10	27-Oct-10																						
Location Plan (FEP Condition 2.8)	1d	27-Oct-10	27-Oct-10																						
Noise Management plan (FEP Condition 2.9)	1d	27-Oct-10	27-Oct-10																						
Landscape plan (FEP condition 2.10)	1d	31-Jan-11	31-Jan-11																						
EAST VENTILATION ADIT																									
CCT @ Portion 1, 2, 4, 6, 22	1315d	27-Sep-10	03-May-14																						
EV Adit @ Portion 4-Advance Works	526d	27-Sep-10	05-Mar-12																						
EV Adit Portion 1, 2, 6, 22	26d	22-Dec-11	16-Jan-12																						
EV Adit-based on Conforming Design	323d	15-Feb-12	02-Jan-13																						
TCBR1E (TS1 Area)																									
Diaphragm Wall Construction (incl. SI, & tests after completion)	107d	26-Apr-11	10-Aug-11																						
Excavation & Lateral Support, ELS	99d	16-Jul-11	22-Oct-11																						
Cut & Cover Tunnel Construction (incl. backfill)	78d	22-Oct-11	07-Jan-12																						
OHVD and Cable Trough (access from Portion 22)	76d	18-Dec-13	03-Mar-14																						
TCBR2 + TCBR3 (TS2 Area)																									
Diaphragm Wall Construction	118d	06-Jul-12	31-Oct-12																						
Excavation & Lateral Support, ELS	248d	06-Jul-12	10-Mar-13																						
Cut & Cover Tunnel Construction	164d	11-Mar-13	21-Aug-13																						
OHVD Cable Trough (Access from Portion 22)	150d	05-Aug-13	01-Jan-14																						
TCBR1W (TS4 Area)																									
Diaphragm Wall Construction	148d	28-Jun-11	22-Nov-11																						
Excavation & Lateral Support, ELS	319d	26-Jun-11	11-May-12																						
Landing Steps - Demolition/Reconstruct as footpath	40d	28-Jun-11	23-Aug-11																						

- ◆ Milestone
- ◆ Milestone
- ▬ Remaining Work
- ▬ Critical Remaining Work
- ▬ Actual Work

1 of 2

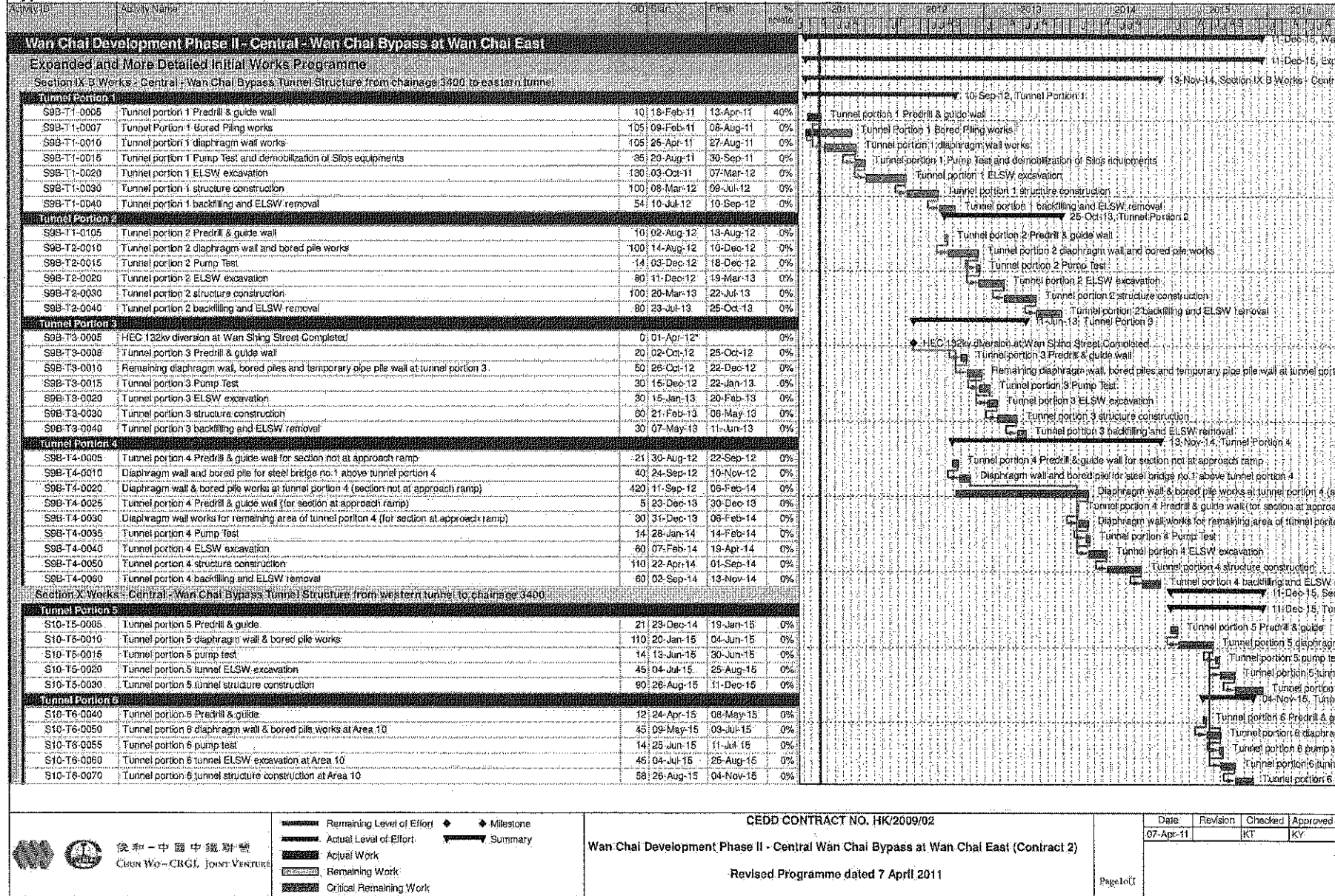
China State Construction Engineering (Hong Kong) Ltd.
Contract No. HY/2009/15 - Central Wan Chai By Pass - Tunnel
(CBTS Section)

Prepared by William Caluza			
Date	Revision	Checked	Approved
14-Mar-11	Revision C	ST	KL
	File: GC01a		
	(Layout:HY/2009/15: CWB - Summary)		



Wan Chai Development Phase II - Central - Wan Chai
Bypass at Wan Chai East CONTRACT HK/2009/02

CHUN WO - CRGL JV



和 - 中國中鐵聯合
Chun Wo - CRGL Joint Venture

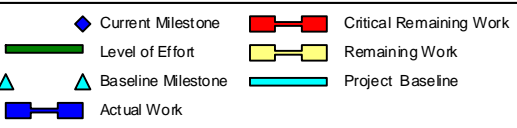
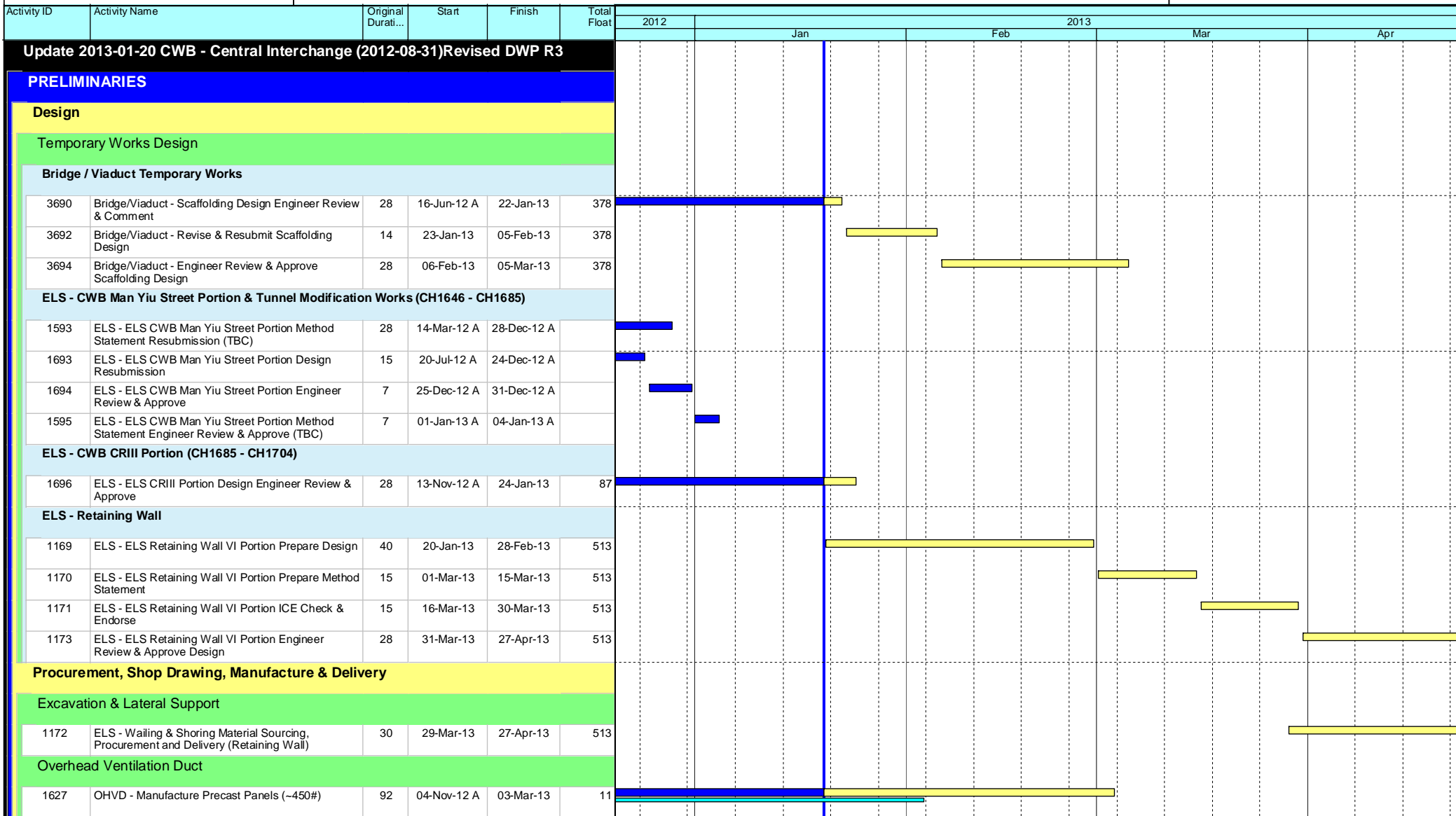
Remaining Level of Effort ◆ Milestone
Actual Level of Effort Summary
Actual Work
Remaining Work
Critical Remaining Work

CEDD CONTRACT NO. HK/2009/02
Wan Chai Development Phase II - Central Wan Chai Bypass at Wan Chai East (Contract 2)
Revised Programme dated 7 April 2011

Date	Revision	Checked	Approved
07-Apr-11		KT	KY

HY/2009/18 Central - Wan Chai Bypass (Central Interchange)

TASK filters: 3 Months, Not HL.



Leighton Contractors (Asia) Limited Programme Update 28 (Jan 2013) THREE MONTH ROLLING

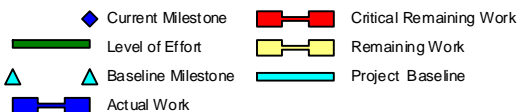
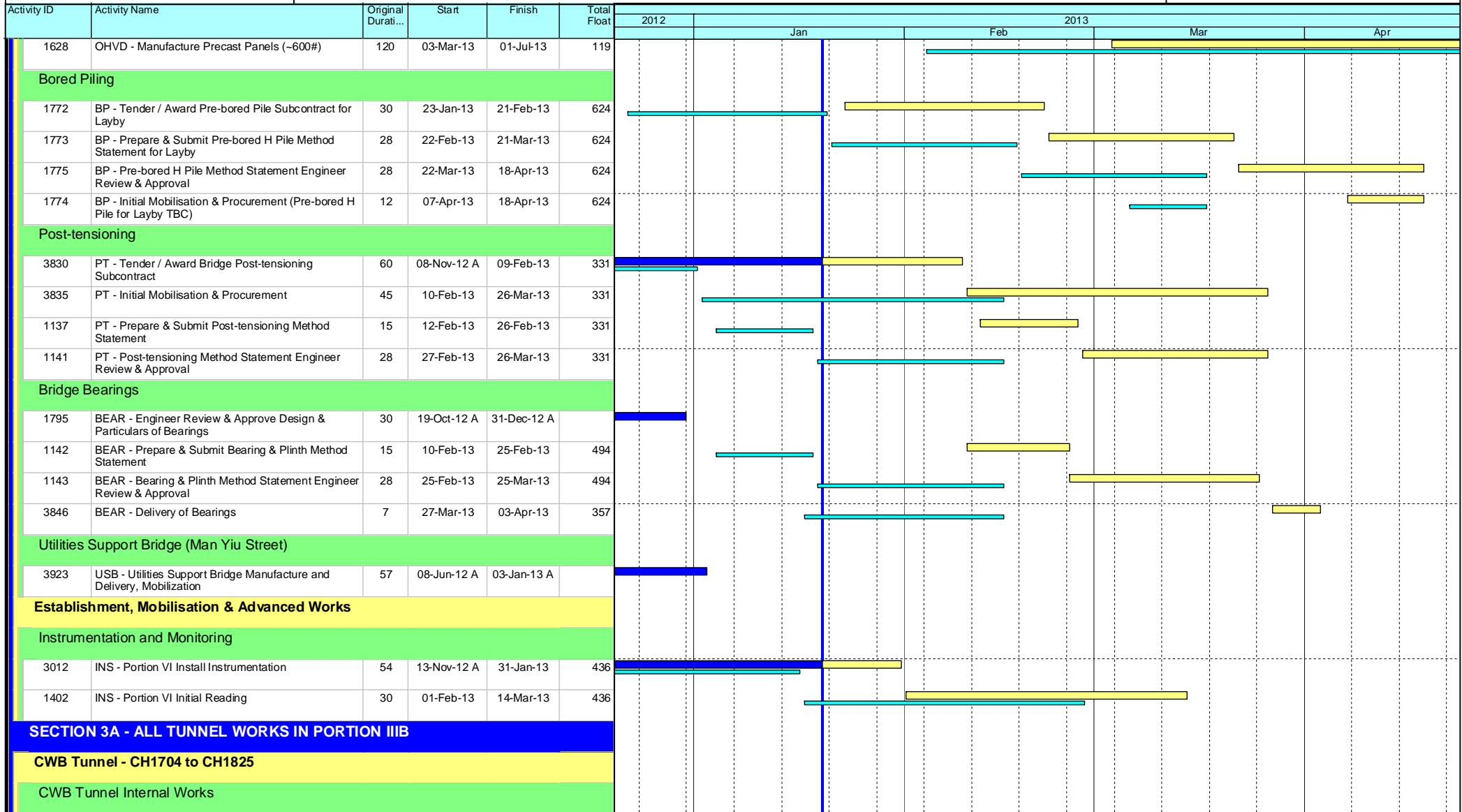
Project ID: U028
 Baseline: DCP4-4
 Layout: Update Three Month Rolling U028
 Page 1 of 7

U027 Programme Update 28 (Jan 2013)			
Date	Revision	Checked	Approv...
21-Jan-13	U028	EC	RW
21-Dec-12	U027	EC	RW

Data Date: 20-Jan-13

HY/2009/18 Central - Wan Chai Bypass (Central Interchange)

TASK filters: 3 Months, Not HL.



Leighton Contractors (Asia) Limited Programme Update 28 (Jan 2013) THREE MONTH ROLLING

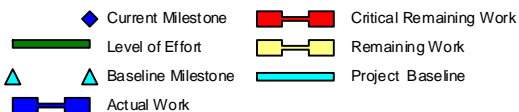
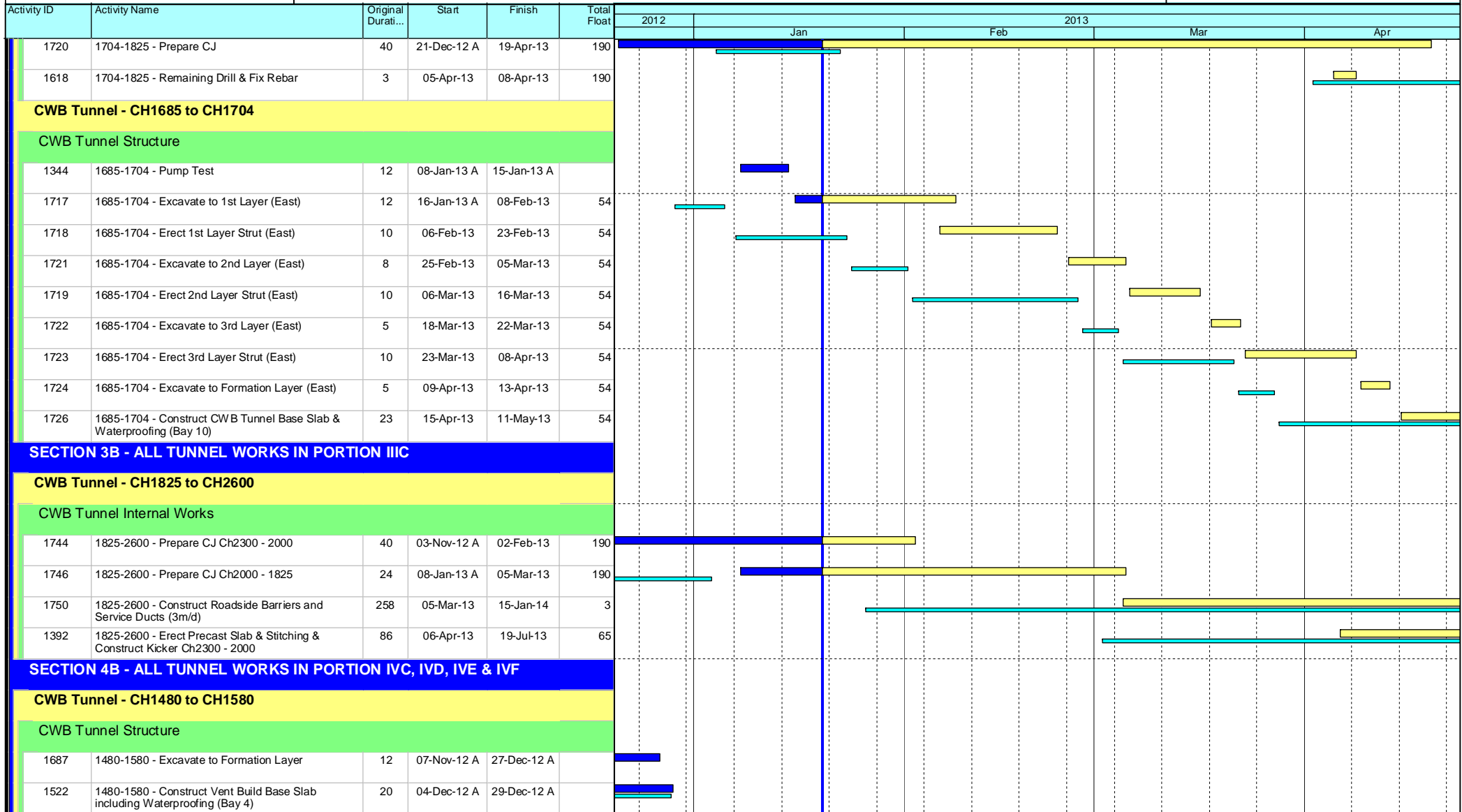
Project ID: U028
Baseline: DCP4-4
Layout: Update Three Month Rolling U028
Page 2 of 7

U027 Programme Update 28 (Jan 2013)			
Date	Revision	Checked	Approv...
21-Jan-13	U028	EC	RW
21-Dec-12	U027	EC	RW

HY/2009/18 Central - Wan Chai Bypass (Central Interchange)



TASK filters: 3 Months, Not HL.



Leighton Contractors (Asia) Limited Programme Update 28 (Jan 2013) THREE MONTH ROLLING

Project ID: U028
 Baseline: DCP4-4
 Layout: Update Three Month Rolling U028
 Page 3 of 7

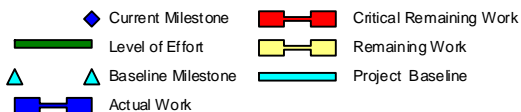
U027 Programme Update 28 (Jan 2013)			
Date	Revision	Checked	Approv...
21-Jan-13	U028	EC	RW
21-Dec-12	U027	EC	RW

HY/2009/18 Central - Wan Chai Bypass (Central Interchange)



TASK filters: 3 Months, Not HL.

Activity ID	Activity Name	Original Durati...	Start	Finish	Total Float	2013			
						Jan	Feb	Mar	Apr
1594	1480-1580 - Erect RE Wall & Backfill for Tunnel Baseslab (Bay 5)	18	21-Dec-12 A	25-Jan-13	58				
1519	1480-1580 - Construct Vent Build Base Slab including Waterproofing (Bay 2)	22	30-Dec-12 A	02-Feb-13	6				
1585	1480-1580 - Construct Vent Build Basement Bearing Wall	32	30-Dec-12 A	16-Mar-13	29				
1610	1480-1580 - Construct Vent Build Tunnel Base Slab including Waterproofing (Bay 6)	16	08-Jan-13 A	07-Feb-13	41				
1526	1480-1580 - Construct Vent Build Basement Outer Wall (1535)	20	16-Jan-13 A	19-Feb-13	41				
1702	1480-1580 - Construct Vent Build Tunnel Base Slab including Waterproofing (Bay 5)	23	26-Jan-13	28-Feb-13	58				
1747	1480-1580 - Erect Struct S3A & Remove the Soil Berm	6	02-Feb-13	08-Feb-13	6				
1748	1480-1580 - Dismantle of Basement Struts (Layer 3 & 4)	30	06-Feb-13	19-Mar-13	27				
1698	1480-1580 - Construct Vent Build Tunnel Central Wall (Bay 6)	20	08-Feb-13	09-Mar-13	41				
1523	1480-1580 - Construct Vent Build Base Slab including Waterproofing (Bay 1)	15	16-Feb-13	05-Mar-13	6				
1690	1480-1580 - Construct Vent Build Tunnel Base Slab including Waterproofing (Bay 4)	25	20-Feb-13	20-Mar-13	41				
1762	1480-1580 - Construct Vent Build Tunnel Central Wall (Bay 5)	18	01-Mar-13	21-Mar-13	58				
1524	1480-1580 - Construct Vent Build Basement Outer Wall & Backfill (1480)	23	06-Mar-13	05-Apr-13	31				
1699	1480-1580 - Construct Vent Build Tunnel OHVD & Kickers (Bay 6)	18	11-Mar-13	03-Apr-13	41				
1527	1480-1580 - Construct Vent Build Basement Internal Wall	15	13-Mar-13	02-Apr-13	6				
1580	1480-1580 - Construct Vent Build Mezzanine Floor Slab	20	20-Mar-13	16-Apr-13	6				
1754	1480-1580 - Construct Vent Build Tunnel Central Wall (Bay 4)	18	21-Mar-13	15-Apr-13	86				
1761	1480-1580 - Construct Vent Build Tunnel OHVD & Kickers (Bay 5)	18	02-Apr-13	23-Apr-13	58				
1725	1480-1580 - Construct Vent Build Tunnel Top Slab (Bay 6)	40	05-Apr-13	23-May-13	41				
1760	1480-1580 - Construct Vent Build Tunnel OHVD & Kickers (Bay 4 - Top Down Slab)	18	16-Apr-13	07-May-13	86				
1590	1480-1580 - Construct Vent Build Tunnel Base Slab (Bay 2)	25	17-Apr-13	16-May-13	7				
SECTION 4A - ALL TUNNEL WORKS IN PORTION IVA, IVB, IVG & IVH									
CWB Tunnel - CH1580 to CH1646									
CWB Tunnel Structure									
11304	1580-1646 - Excavate 3rd Layer (West)	14	08-Dec-12 A	20-Dec-12 A					



Leighton Contractors (Asia) Limited Programme Update 28 (Jan 2013) THREE MONTH ROLLING

Project ID: U028
 Baseline: DCP4-4
 Layout: Update Three Month Rolling U028
 Page 4 of 7

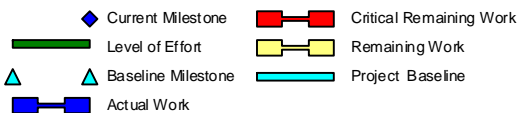
U027 Programme Update 28 (Jan 2013)			
Date	Revision	Checked	Approv...
21-Jan-13	U028	EC	RW
21-Dec-12	U027	EC	RW

HY/2009/18 Central - Wan Chai Bypass (Central Interchange)



TASK filters: 3 Months, Not HL.

Activity ID	Activity Name	Original Durati...	Start	Finish	Total Float	2013				
						2012	Jan	Feb	Mar	Apr
11305	1580-1646 - Erect 3rd Layer Strut (West)	20	21-Dec-12 A	02-Jan-13 A						
1705	1580-1646 - Excavate 2nd Layer (East)	8	22-Dec-12 A	29-Jan-13	3					
1734	1580-1646 - Construct CWB Tunnel Base Slab & Waterproofing (Bay 7)	20	11-Jan-13 A	23-Feb-13	9					
11306	1580-1646 - Excavate 4th Layer (West)	7	21-Jan-13	28-Jan-13	9					
1706	1580-1646 - Erect 2nd Layer Strut (East)	6	30-Jan-13	05-Feb-13	3					
1707	1580-1646 - Excavate 3rd Layer (East)	4	06-Feb-13	16-Feb-13	3					
1708	1580-1646 - Erect 3rd Layer Strut (East)	6	18-Feb-13	23-Feb-13	3					
1709	1580-1646 - Excavate 4th Layer (East)	4	25-Feb-13	28-Feb-13	3					
1737	1580-1646 - Construct CWB Tunnel Center Wall (Bay 7)	18	25-Feb-13	16-Mar-13	9					
1735	1580-1646 - Construct CWB Tunnel Base Slab & Waterproofing (Bay 8)	20	01-Mar-13	23-Mar-13	3					
1736	1580-1646 - Construct CWB Tunnel Base Slab & Waterproofing (Bay 9)	18	16-Mar-13	10-Apr-13	6					
1740	1580-1646 - Construct CWB Tunnel OHVD & Kickers (Bay 7)	18	18-Mar-13	11-Apr-13	9					
1738	1580-1646 - Construct CWB Tunnel Center Wall (Bay 8)	18	25-Mar-13	18-Apr-13	3					
1739	1580-1646 - Construct CWB Tunnel Center Wall (Bay 9)	18	11-Apr-13	02-May-13	6					
1743	1580-1646 - Construct CWB Tunnel Top Slab (Bay 7)	39	12-Apr-13	29-May-13	9					
1741	1580-1646 - Construct CWB Tunnel OHVD & Kickers (Bay 8)	18	19-Apr-13	10-May-13	3					
CWB Tunnel - CH1646 to CH1685										
CWB Tunnel Structure										
1608	1646-1685 - Jet Grouting	38	05-Oct-12 A	21-Jan-13	6					
2710	1646-1685 - Install Supporting Bridges for Cooling Water Mains & Install S1A Strut	35	13-Dec-12 A	04-Feb-13	0					
1414	1646-1685 Pump Test	3	08-Jan-13 A	15-Jan-13 A						
11480	1646-1685 - Demolish Existing Roof Slab at East & West	10	12-Jan-13 A	04-Feb-13	0					
1644	1646-1685 - Excavate to S1B Layer East & West (+4.5mPD)	12	21-Jan-13	02-Feb-13	4					
1710	1646-1685 - Excavate to 1st Layer (West) 1634-1650	6	22-Jan-13	28-Jan-13	6					
1711	1646-1685 - Erect 1st Layer Strut (West) 1634-1650	6	29-Jan-13	04-Feb-13	6					



Leighton Contractors (Asia) Limited Programme Update 28 (Jan 2013) THREE MONTH ROLLING

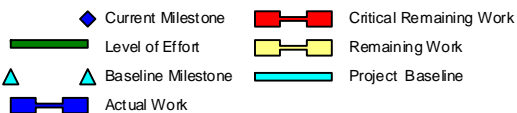
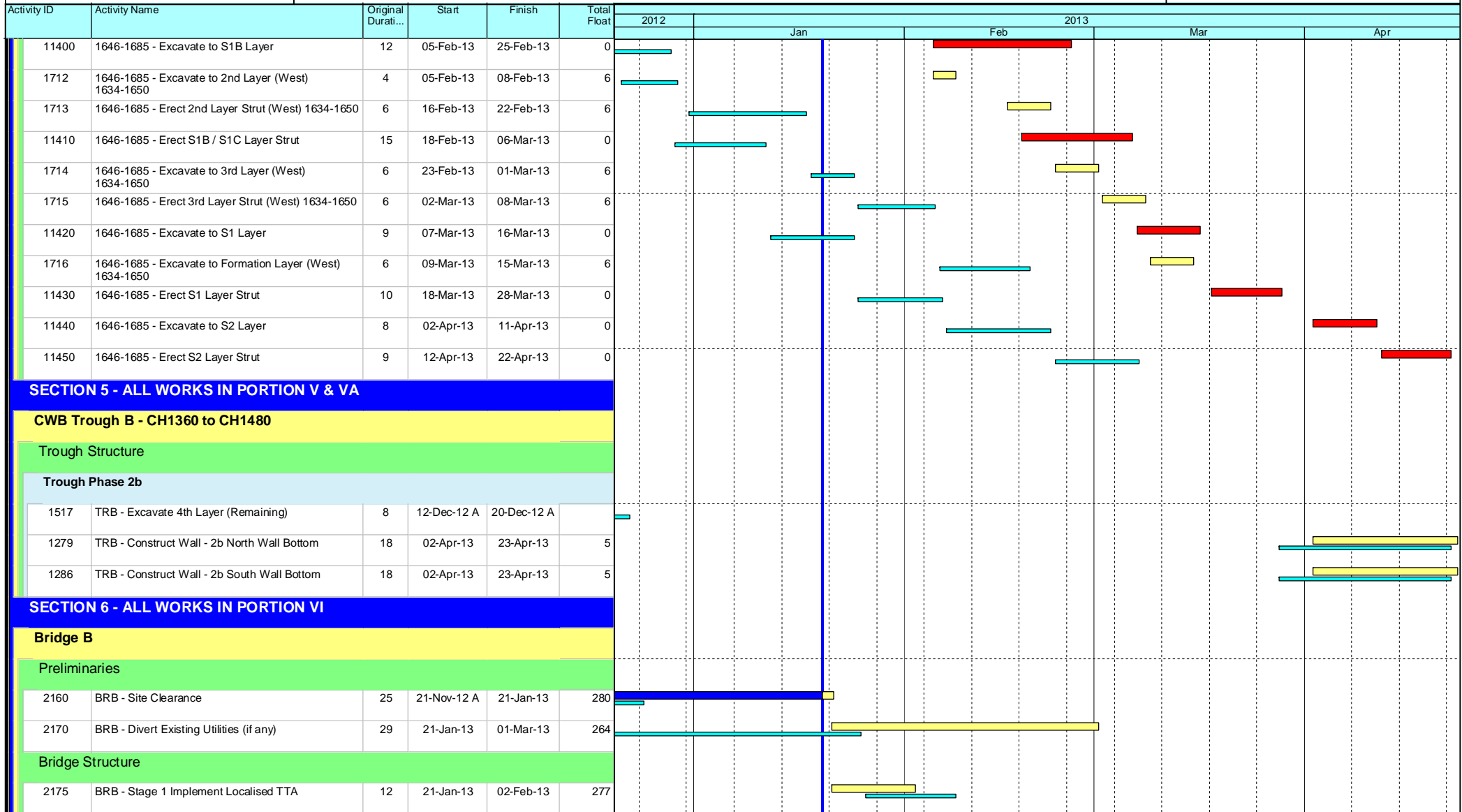
Project ID: U028
 Baseline: DCP4-4
 Layout: Update Three Month Rolling U028
 Page 5 of 7

U027 Programme Update 28 (Jan 2013)			
Date	Revision	Checked	Approv...
21-Jan-13	U028	EC	RW
21-Dec-12	U027	EC	RW

HY/2009/18 Central - Wan Chai Bypass (Central Interchange)



TASK filters: 3 Months, Not HL.



Leighton Contractors (Asia) Limited Programme Update 28 (Jan 2013) THREE MONTH ROLLING

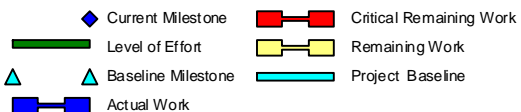
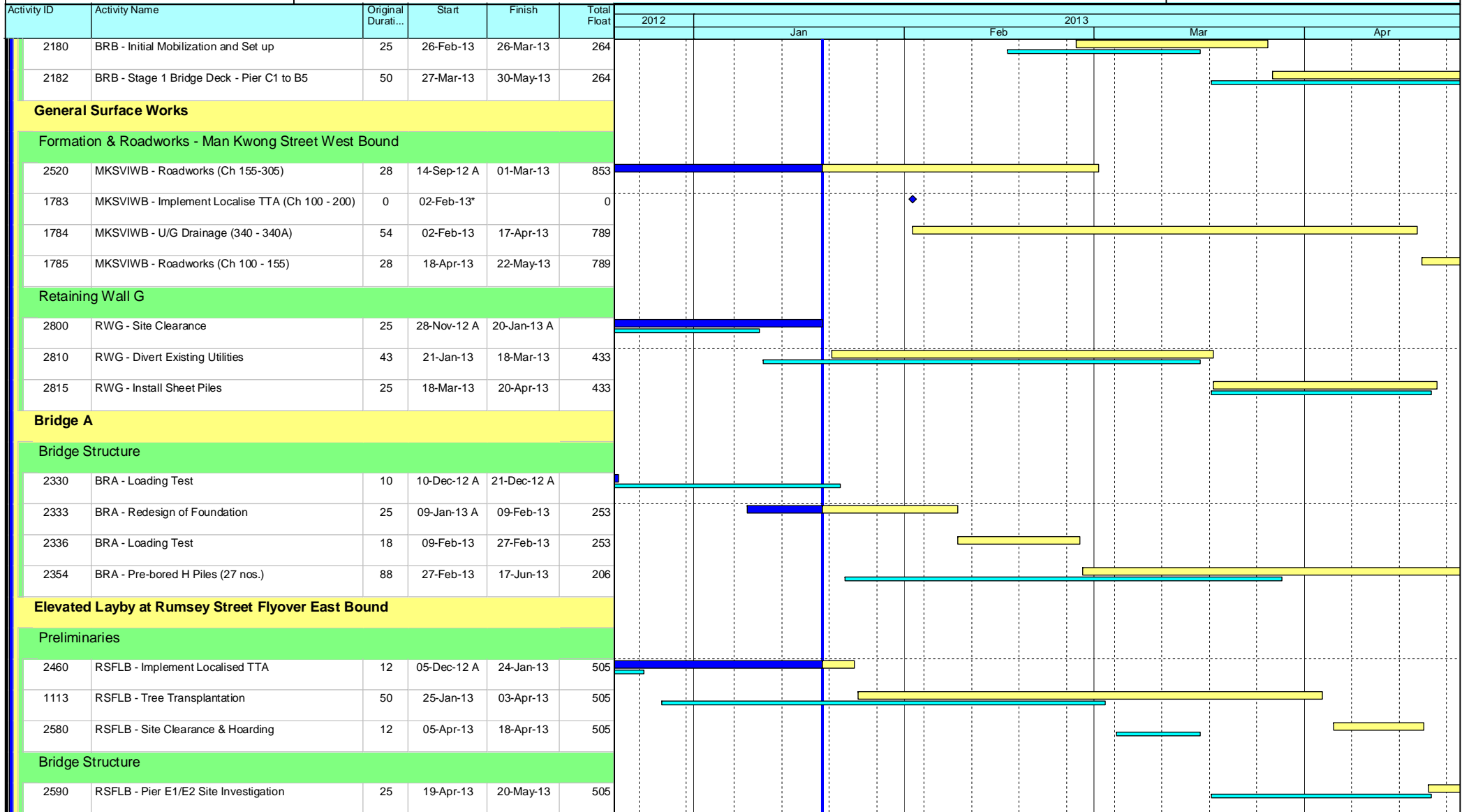
Project ID: U028
 Baseline: DCP4-4
 Layout: Update Three Month Rolling U028
 Page 6 of 7

U027 Programme Update 28 (Jan 2013)			
Date	Revision	Checked	Approv...
21-Jan-13	U028	EC	RW
21-Dec-12	U027	EC	RW

Data Date: 20-Jan-13

HY/2009/18 Central - Wan Chai Bypass (Central Interchange)

TASK filters: 3 Months, Not HL.



Leighton Contractors (Asia) Limited Programme Update 28 (Jan 2013) THREE MONTH ROLLING

Project ID: U028
Baseline: DCP4-4
Layout: Update Three Month Rolling U028
Page 7 of 7

U027 Programme Update 28 (Jan 2013)			
Date	Revision	Checked	Approv...
21-Jan-13	U028	EC	RW
21-Dec-12	U027	EC	RW

Activity ID	Activity Name	Rem Dur	Start	Finish	2012	2013															
					January					February				March				April			
					24	31	07	14	21	28	04	11	18	25	04	11	18	25	01	08	15
1011-1910.50	Pier F7 Dolphin Socketed H-Pile 4	0	19-Nov-12 A	31-Dec-12 A	█	█															
1011-1910.60	Pier F7 Dolphin Socketed H-Pile 6	0	19-Nov-12 A	28-Dec-12 A	█	█															
1011-2030	F7 Dismantle Piling Platform	12	14-Feb-13	27-Feb-13																	
1011-2270	F7 Pile Cap Shutter Cofferdam	18	14-Mar-13	06-Apr-13																	
1011-2275	F7 Pile Cap Construction	12	08-Apr-13	20-Apr-13																	
1011-2300	F8 Pile Cap Shutter Cofferdam	18	25-Mar-13	17-Apr-13																	
1011-0802.4	Pier F9 Dolphin Socketed H-Pile P4	0	04-Dec-12 A	10-Jan-13 A	█	█															
1011-0802.6	Pier F9 Dolphin Socketed H-Pile P6	0	04-Dec-12 A	12-Jan-13 A	█	█															
1011-2050	Dismantle Piling Platform at Pier F9	12	21-Feb-13	06-Mar-13																	
1011-1970.1	Pier F10 Dolphin Socketed H-Pile P1	0	15-Nov-12 A	03-Jan-13 A	█	█															
1011-1970.2	Pier F10 Dolphin Socketed H-Pile P2	0	15-Nov-12 A	05-Jan-13 A	█	█															
1011-1970.3	Pier F10 Dolphin Socketed H-Pile P3	0	15-Nov-12 A	07-Jan-13 A	█	█															
1011-1970.4	Pier F10 Dolphin Socketed H-Pile P5	0	15-Nov-12 A	11-Jan-13 A	█	█															
1011-1970.5	Pier F10 Dolphin Socketed H-Pile P4	13	15-Jan-13 A	04-Feb-13																	
1011-1970.6	Pier F10 Dolphin Socketed H-Pile P6	15	15-Jan-13 A	06-Feb-13																	
1011-2060	Dismantle Piling Platform at Pier F10	12	28-Feb-13	13-Mar-13																	
1011-1770.1	Pier F11 Dolphin Socketed H-Pile P1	0	23-Nov-12 A	17-Jan-13 A	█	█															
1011-1770.2	Pier F11 Dolphin Socketed H-Pile P2	0	23-Nov-12 A	14-Jan-13 A	█	█															
1011-1770.3	Pier F11 Dolphin Socketed H-Pile P3	0	23-Nov-12 A	15-Jan-13 A	█	█															
1011-1770.4	Pier F11 Dolphin Socketed H-Pile P5	0	23-Nov-12 A	16-Jan-13 A	█	█															
1011-1770.5	Pier F11 Dolphin Socketed H-Pile P4	21	26-Jan-13	22-Feb-13																	
1011-1770.6	Pier F11 Dolphin Socketed H-Pile P6	21	26-Jan-13	22-Feb-13																	
1011-2070	Dismantle Piling Platform at Pier F11	12	07-Mar-13	20-Mar-13																	
1011-2350	F11 Pile Cap Construction	18	21-Mar-13	13-Apr-13																	
1011-1822.1	Pier F12 Dolphin Socketed H-Pile P1	5	04-Jan-13 A	25-Jan-13	█	█															
1011-1822.2	Pier F12 Dolphin Socketed H-Pile P2	7	04-Jan-13 A	28-Jan-13	█	█															
1011-1822.3	Pier F12 Dolphin Socketed H-Pile P3	8	04-Jan-13 A	29-Jan-13	█	█															
1011-1822.4	Pier F12 Dolphin Socketed H-Pile P5	10	04-Jan-13 A	31-Jan-13	█	█															
1011-1822.5	Pier F12 Dolphin Socketed H-Pile P4	18	01-Feb-13	25-Feb-13																	
1011-1822.6	Pier F12 Dolphin Socketed H-Pile P6	18	01-Feb-13	25-Feb-13																	
1011-2075	Dismantle Piling Platform at Pier F12	12	14-Mar-13	27-Mar-13																	
1011-1890.50	Pier F13 Dolphin Socketed H-Pile 4	3	31-Dec-12 A	23-Jan-13	█	█															
1011-1890.60	Pier F13 Dolphin Socketed H-Pile 6	5	31-Dec-12 A	25-Jan-13	█	█															
1011-2080	Dismantle Piling Platform at Pier F13	12	21-Mar-13	06-Apr-13																	
1011-2145	Marine bored pile testing F14	0	24-Sep-12 A	31-Dec-12 A	█	█															
1011-1782.50	Pier F14 Dolphin Socketed H-Pile 4	15	17-Jan-13 A	06-Feb-13																	
1011-1782.60	Pier F14 Dolphin Socketed H-Pile 6	17	17-Jan-13 A	08-Feb-13																	
1011-2085	Dismantle Piling Platform at Pier F14	12	28-Mar-13	13-Apr-13																	
Pier F01 to F02																					
1011-2860	F1A Pile Cap Shutter Cofferdam	3	03-Jan-13 A	23-Jan-13	█	█															
1011-2865	F1A Pile Cap Construction	12	24-Jan-13	06-Feb-13																	
1011-2870	F1A Pier/Column Construction	12	07-Feb-13	23-Feb-13																	
1011-2880	F1A Crosshead Construction	18	25-Feb-13	16-Mar-13																	
1011-2890	F1B Pile Cap Shutter Cofferdam	18	07-Feb-13	02-Mar-13																	

- █ Remaining Level of Effort
- █ Actual Level of Effort
- █ Actual Work
- █ Remaining Work
- █ Critical Remaining Work
- ◆ Milestone

Contract HY/2009/19

Three Month Rolling Programme (20 JAN 2013 to 19 APR 2013)

3MRP

3MRP - Jan 2013 to Apr 2013

Activity ID	Activity Name	Rem Dur	Start	Finish	2012																	2013												
					2012												January					February					March					April		
					24	31	07	14	21	28	04	11	18	25	04	11	18	25	01	08	15													
10.6.1 - Approach Ramp (Excluding Portion IIB)																																		
Bored Piles																																		
1061-1051	Bored Pile Ramp - BN42	0	10-Dec-12 A	02-Jan-13 A	Bored Pile Ramp - BN42																													
1061-1490	Bored Pile Ramp - BN40	0	03-Jan-13 A	12-Jan-13 A	Bored Pile Ramp - BN40																													
1061-1500	Bored Pile Ramp - BN41	4	14-Jan-13 A	24-Jan-13	Bored Pile Ramp - BN41																													
1061-1510	Bored Pile Ramp - BN44	15	25-Jan-13	14-Feb-13	Bored Pile Ramp - BN44																													
1061-1520	Bored Pile Ramp - BN01	15	15-Feb-13	04-Mar-13	Bored Pile Ramp - BN01																													
1061-1530	Bored Pile Ramp - BN02	15	05-Mar-13	21-Mar-13	Bored Pile Ramp - BN02																													
1061-1540	Bored Pile Ramp - BN03	15	22-Mar-13	11-Apr-13	Bored Pile Ramp - BN03																													
1061-1550	Bored Pile Ramp - BN04	15	12-Apr-13	29-Apr-13	Bored Pile Ramp - BN04																													

- █ Remaining Level of Effort
- █ Actual Level of Effort
- █ Actual Work
- █ Remaining Work
- █ Critical Remaining Work
- ◆ Milestone

Contract HY/2009/19

Three Month Rolling Programme (20 JAN 2013 to 19 APR 2013)

3MRP
 3MRP - Jan 2013 to Apr 2013
 Page 7 of 7